

MAINTENANCE OF TODAY



PROBLEMS WE FACE



MAINTENANCE NEW WAY



BENEFITS



OUT OF ORDER



PICK UP PARTS & TOOLS



IN ORDER

• Only action when lift is out of order / Aktionen erfolgen nur, wenn der Aufzug bereits außer Betrieb ist.

• Wasting time by driving / Unnötige Anfahrten und Fahrtzeiten.

• Spending more time diagnosing / Lange Diagnosezeiten.

• Less time for good maintenance / Weniger qualitative Zeit für die eigentliche Wartung.

• Don't have the parts or tools / Fehlende Teile und Werkzeuge.

• Staff shortage / Personalmangel.

• Too much work / Schwierige Planbarkeit.



IN ORDER



GO TO LIFT WITH RIGHT TOOLS & PARTS



IN ORDER

• Act before lift is out of order / Proaktives Handeln, bevor der Aufzug überhaupt ausfällt.

• Views online dashboard before visit / Diagnose im On-line-Dashboard noch vor dem Einsatz.

• See status, faults & events. / Status, Fehler und Statistik des Aufzugs.

• No needless driving time to pick up right parts & tools / Vermeidung von unnötigen Anfahrten durch Bereitstellung der richtigen Teile.

• Same job with less people / Gleiche Arbeit mit weniger Leuten.

• More lifts in portfolio / Mehr Aufzüge im Portfolio.

• Additional support / Zusätzliche Unterstützungsleistungen.

• Less lifts out of order, more happy clients / Weniger Ausfälle, mehr zufriedene Kunden. Weniger defekte Aufzüge, mehr zufriedene Kunden.



MODUSYSTEM

Please visit our website for more information about our products: www.modusystem.com

MODU-VIEW MINI

Same amount of work but a staff shortage?

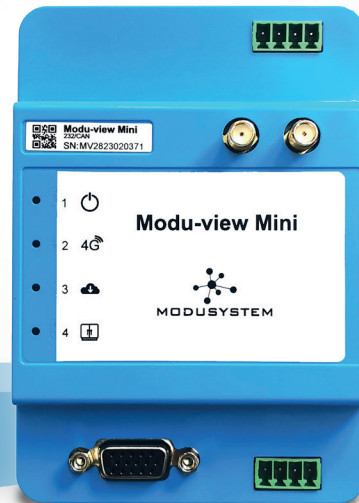
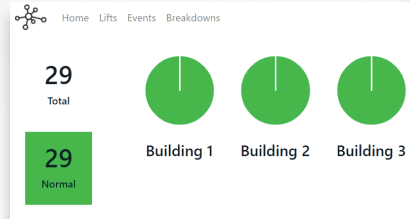
The Modu-view mini can help you and provides support for your company and your mechanic!

By using the Modu-view mini, maintenance is done in an efficient way that saves you time & money!

Modu-view mini is a lift monitoring system that supports your company and the mechanic. By placing the Modu-view Mini on your lifts, you can read the 7 points via a **personal dashboard**. You can see in 1 overview which lifts are at fault, what events and errors they give and whether action needs to be taken. Not only can you anticipate when a lift is at a standstill, but also when it is still in operation. For example, if a lift indicates many errors about the doors, you will know which parts to take and where the error is without the lift coming to a standstill. This saves you time, but also keeps customers happy!

READ OUT THE 7 POINTS:

- FAULT CODES
- INPUTS
- DOOR ZONE
- DOOR OPEN/CLOSED
- INSPECTION STATUS
- NUMBER OF RUNS
- CONTROLLER STATUS



& more in development!

Supported controllers on this moment:

Sch:

-Bionic Smart, Bionic BX, 3100, 3300, 5300, 6300.

-Sch TX, SX, LX

-Sch MX-GC (Eurolift)

-Sch TX-GX (5500, 6500)

-Orona: Area 1, Area 2, Area 3

Otis:

-All Otis Europe (+ECB escalator)

Kone:

-All Kone LCE

Thyssen:

-Thyssen MCI

-Thyssen TCI (MC1, MC2, MC3)

-Thyssen CMC4

Kollmorgen: 4000,400,411

Arkel:

-ARL100, ARL200, ARL300,

ARL500, ARL700, Arcode, Arcube

Newlift: FST

Bonke: BP117, BP306, BP308

Mik-el:

Mikronic SX Ultra Parallel, serial,

U-STO

(Mikronic SX classic, Ultra

Parallel, Ultra Serial)

RST: IMC-2

/mem:

-mem IM1 Traction

DAC: MEC32

Hydroware:

Analoog:

Canopen Lift controllers:

Lester: Almega II

TVC: Ethos 2

Lisa: Lisa 10, Lisa 20

DMG :



All trademarks are property of their respective owners.



www.modusystem.com
sales@modusystem.com
+31168453388